

U.S. Army Public Health Center

# Army Influenza Activity Report

Week ending 27 February 2021 (Week 8)

## Influenza Vaccination Coverage\*

As of 04 March 2021

93%	Army Active Duty
81%	Army Guard
90%	Army Reserve

\*Data Source: MEDPROS

Click to enlarge images.

## SUMMARY

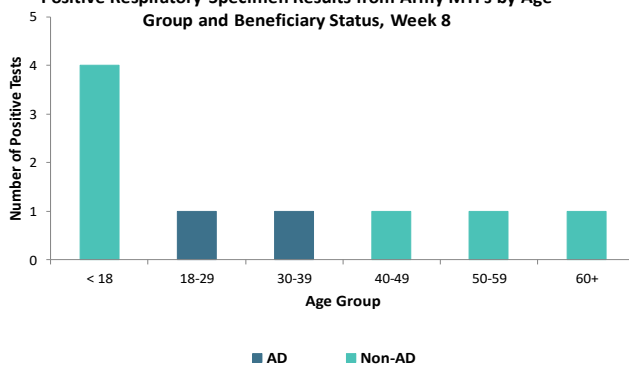
Influenza activity remains low in the Army population. Two positive influenza A specimens were reported during week 8, and two positive influenza B specimens were reported. No hospitalizations were reported in week 8; the season total thus far is four compared to 219 influenza-associated hospitalizations reported as of this time last season. Individuals younger than 18 were most affected by select respiratory illnesses in the Army population; 44% (n=4) of positive specimens were collected from this age group for week 8. Nationwide, influenza activity is low with 0.1% of specimens tested by clinical laboratories being positive for influenza.

## GEOGRAPHIC SPREAD

Data on the geographical spread of influenza is unavailable this season due to the COVID-19 pandemic. For information from previous seasons and additional information about nationwide influenza surveillance, please visit the Centers for Disease Control and Prevention's website by clicking [here](#).

## DEMOGRAPHICS

Positive Respiratory Specimen Results from Army MTFs by Age Group and Beneficiary Status, Week 8

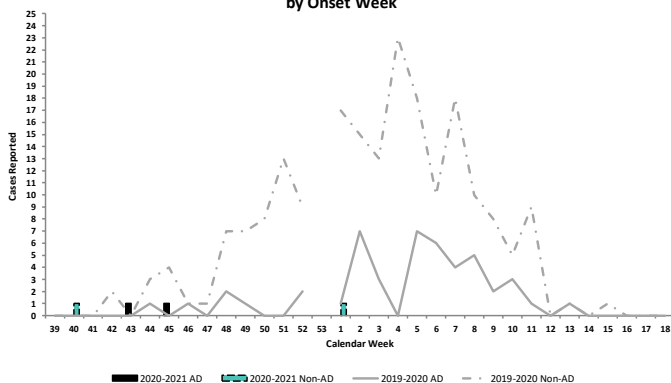


**AD:** Two positive respiratory specimens were collected from active duty (AD) Service members during week 8; one was in the 18-29 years age group and one was in the 30-39 years age group.

**Non-AD:** Seven positive respiratory specimens were collected from non-AD individuals during week 8; 57% (n=4) were collected from individuals under 18 years of age.

## INFLUENZA-ASSOCIATED HOSPITALIZATIONS

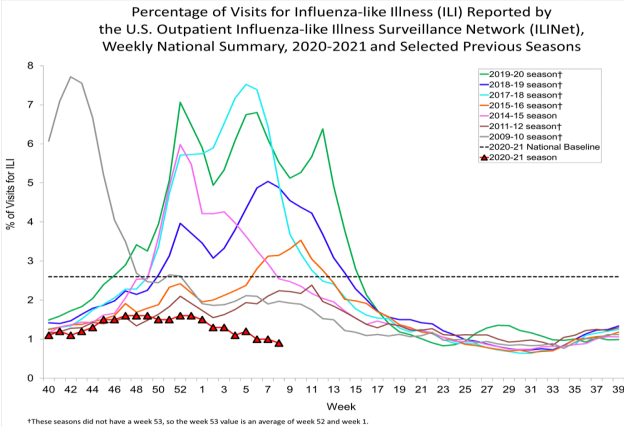
Army Influenza-Associated Hospitalizations Reported in DRSi by Onset Week



No influenza-associated hospitalizations with onset dates in week 8 were reported to the Disease Reporting System internet (DRSi); four hospitalizations have been reported for the entire season thus far. During the 2019-2020 season, 15 hospitalizations were reported in week 8 (with 219 hospitalizations reported from start of the season through week 8).

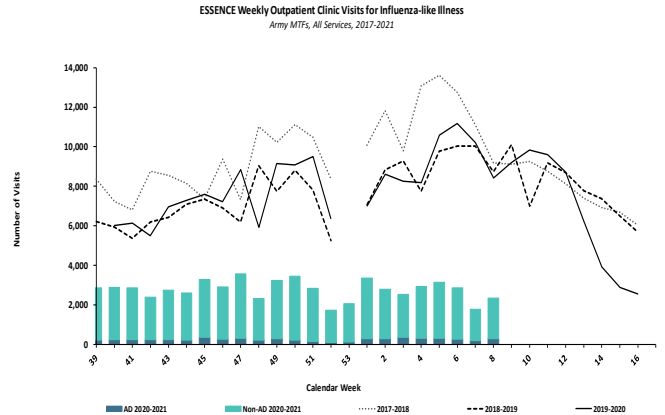
\*DRSi does not capture cases older than 65 years old for influenza-associated hospitalizations.

## ILI ACTIVITY - UNITED STATES

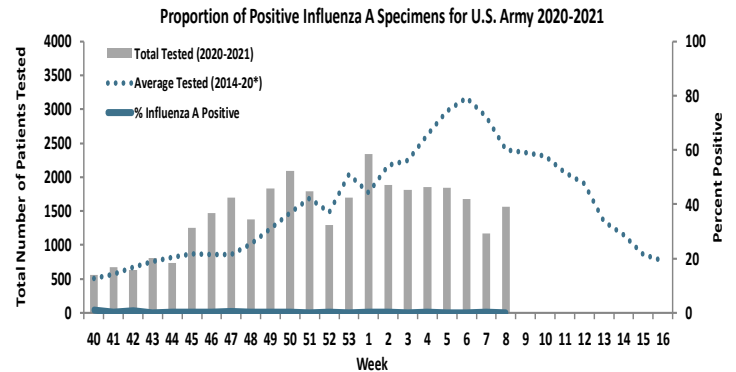
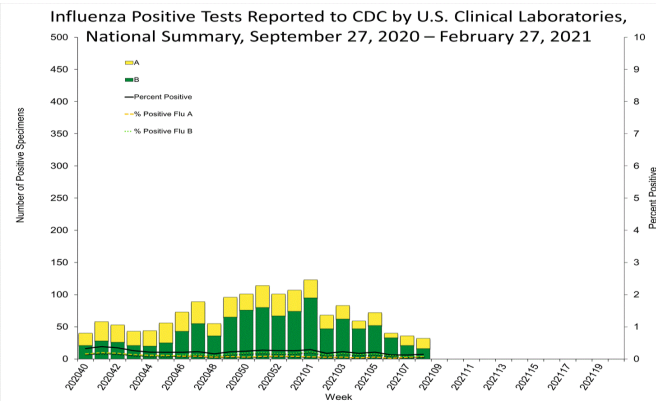


Nationwide in week 8, incident ILI activity was 0.9%; this is below the national baseline of 2.6%. At Army medical treatment facilities, incident ILI activity increased by 39% from week 7 to week 8. The majority of ILI encounters (87%) occurred among non-AD patients in week 8.

## ILI ACTIVITY - ARMY



## LABORATORY RESPIRATORY SPECIMEN TESTING



Nationwide during week 8, a total of 22,242 specimens were tested for influenza by select clinical laboratories and submitted to the CDC; 32 (0.1%) were positive. Influenza B accounted for 50% (n=16) of the total positive specimens. In the Army population, two of the 1,565 specimens tested for influenza A were positive in week 8.

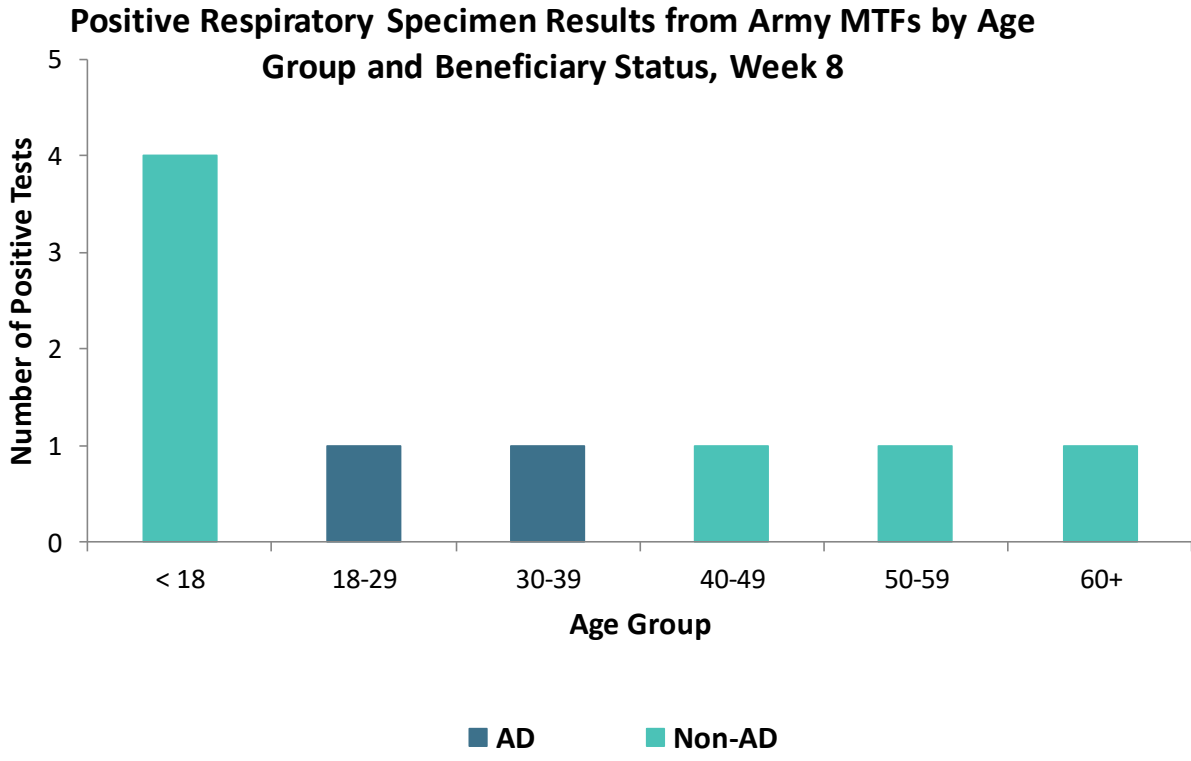
		Week 5	Week 6	Week 7	Week 8	Season Total
Army MTF Laboratory Results, 2020-21	Influenza A	2	1	3	2	78
	Influenza B	6	5	2	2	81
	Adenovirus	2	0	3	1	62
	Enterovirus	10	2	2	3	251
	Parainfluenza	0	0	0	0	9
	RSV	1	1	5	1	40
	Negative	4,307	4,149	3,035	3,804	76,069
	<b>Total</b>	<b>4,328</b>	<b>4,158</b>	<b>3,050</b>	<b>3,813</b>	<b>76,590</b>

Of the 3,813 specimens tested in week 8, less than 1% (n=9) were positive for any type of respiratory illness. Enterovirus accounted for 33% of the positive specimens, while influenza A and influenza B each accounted for 22% (n=2). Adenovirus and respiratory syncytial virus (RSV) each accounted for 11% (n=1) of the positive specimens.

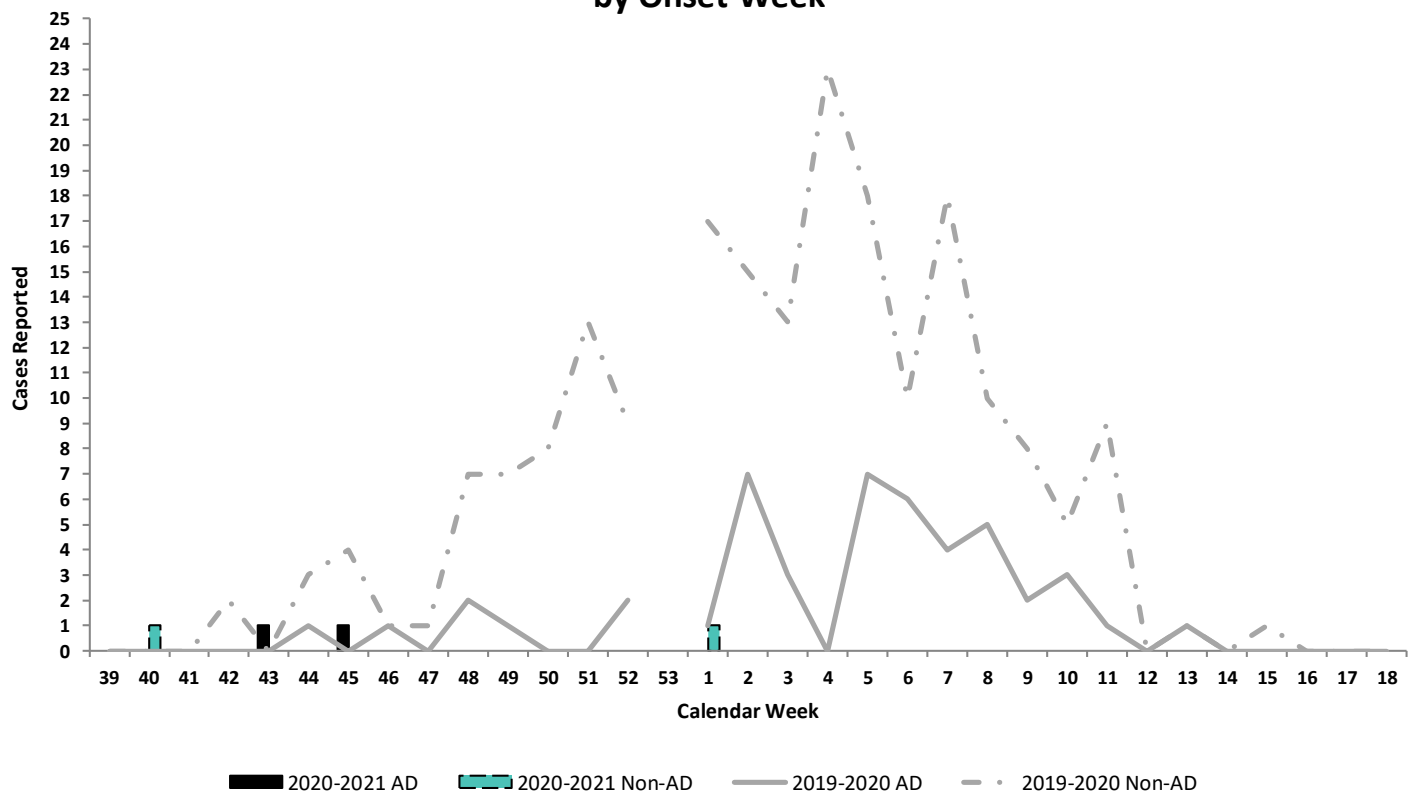
Additionally, the reported number of specimens tested increased by 25% since week 7 (n=3,050).

**Locations providing week 8 laboratory data as of 3 March 2021:** Ft Belvoir, Ft Benning, Ft Bliss, Ft Bragg, Ft Campbell, Ft Carson, Ft Drum, Ft Eustis, Ft Gordon, Ft Hood, Ft Jackson, Ft Knox, Ft Leavenworth, Ft Lee, Ft Leonard Wood, Ft Lewis, Ft Polk, Ft Riley, Ft Rucker, Ft Sam Houston, Ft Sill, Ft Stewart, Ft Wainwright, Korea, Landstuhl Regional Medical Center, Redstone Arsenal, Tripler Army Medical Center, the U.S. Military Academy, and Walter Reed National Military Medical Center.





**Army Influenza-Associated Hospitalizations Reported in DRSi by Onset Week**

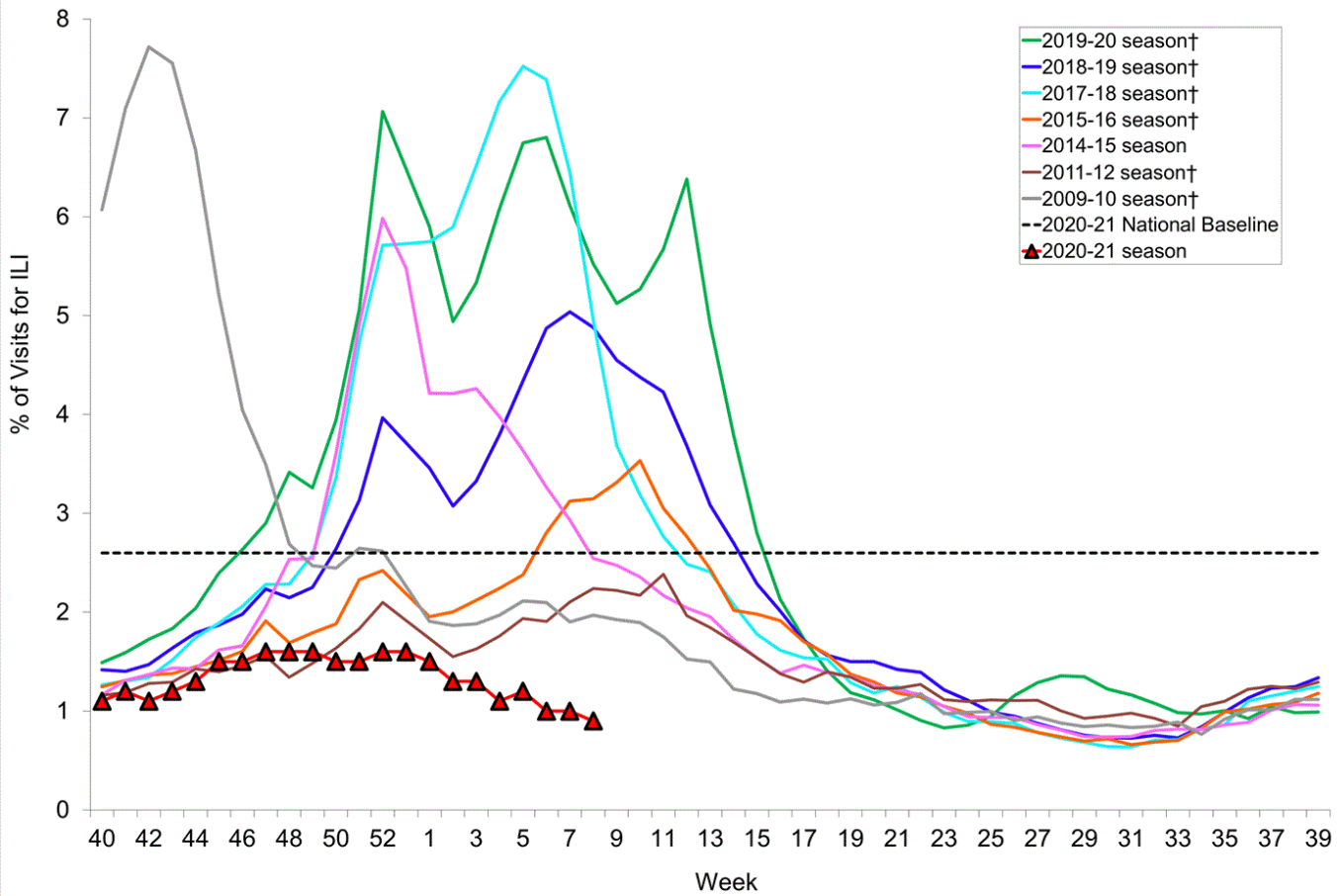


U.S. Army Public Health Center

# Army Influenza Activity Report

Week ending 27 February 2021 (Week 8)

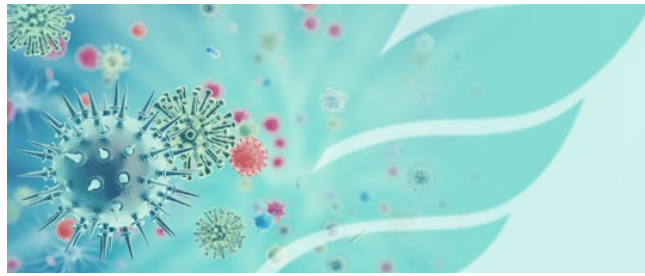
Percentage of Visits for Influenza-like Illness (ILI) Reported by the U.S. Outpatient Influenza-like Illness Surveillance Network (ILINet), Weekly National Summary, 2020-2021 and Selected Previous Seasons



†These seasons did not have a week 53, so the week 53 value is an average of week 52 and week 1.

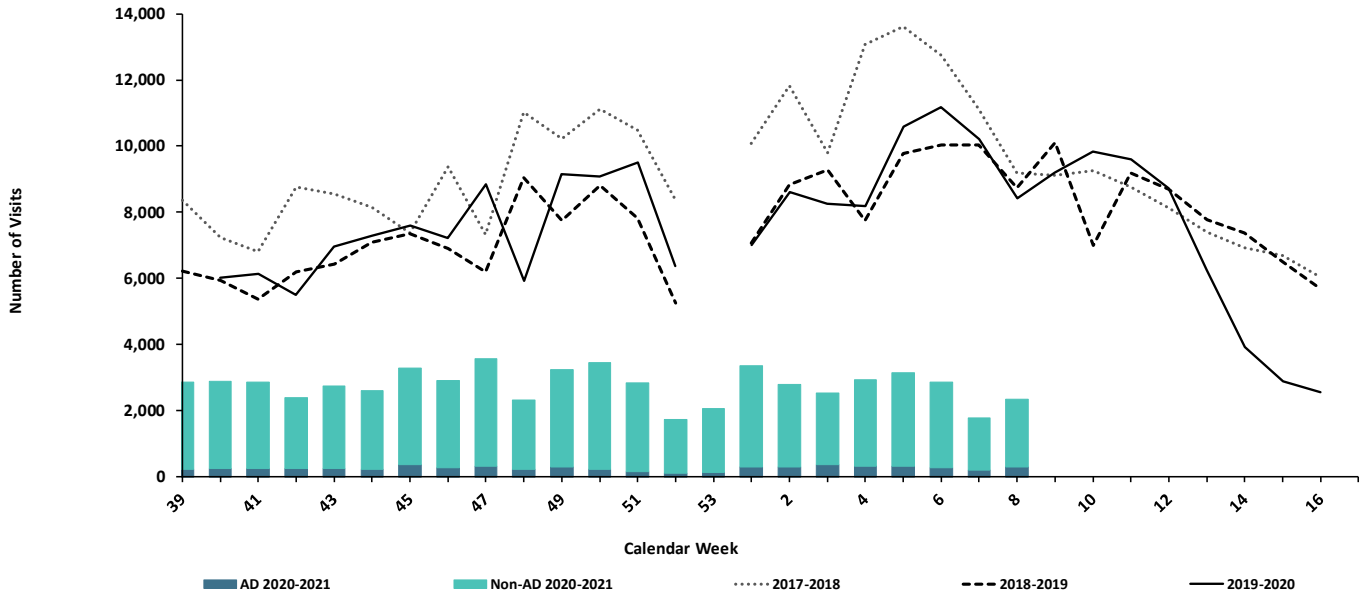
Source: Centers for Disease Control and Prevention (CDC)

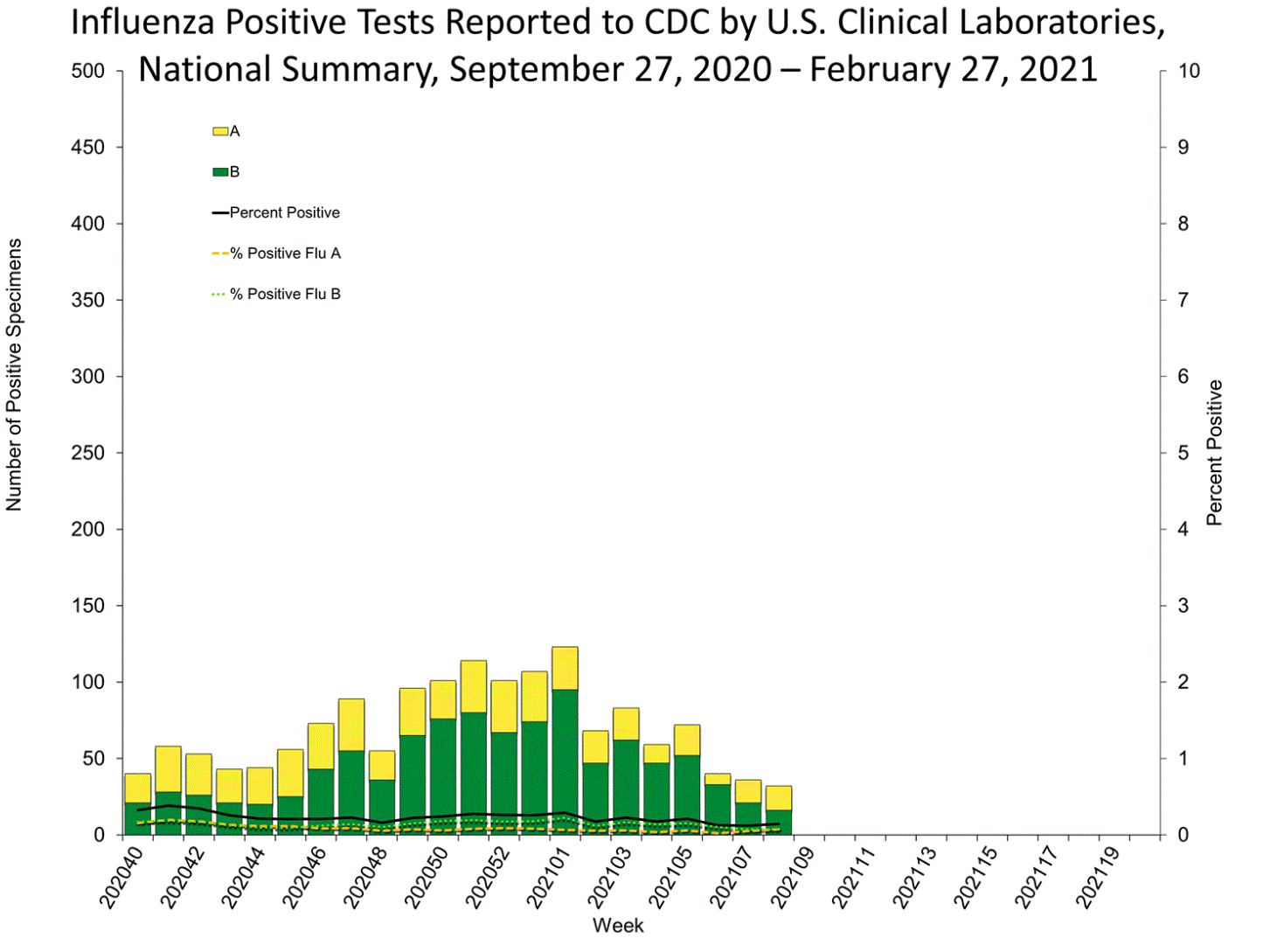




U.S. Army Public Health Center  
**Army Influenza Activity Report**  
Week ending 27 February 2021 (Week 8)

**ESSENCE Weekly Outpatient Clinic Visits for Influenza-like Illness**  
*Army MTFs, All Services, 2017-2021*



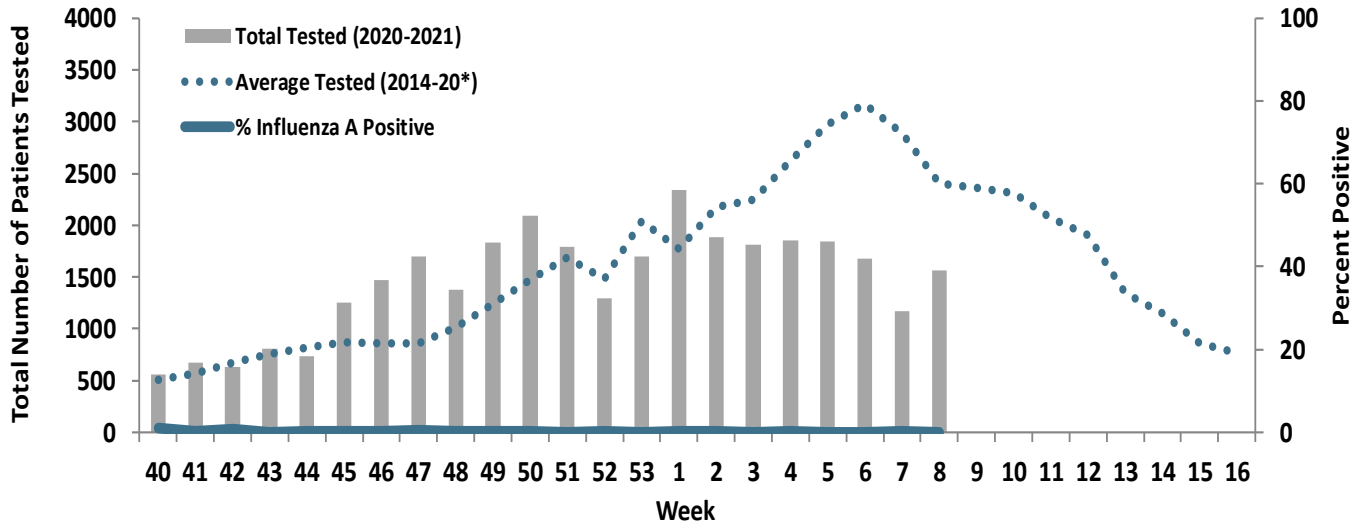


Source: Centers for Disease Control and Prevention (CDC)





Proportion of Positive Influenza A Specimens for U.S. Army 2020-2021



\*2014/2015 influenza season - 2019/2020 influenza season